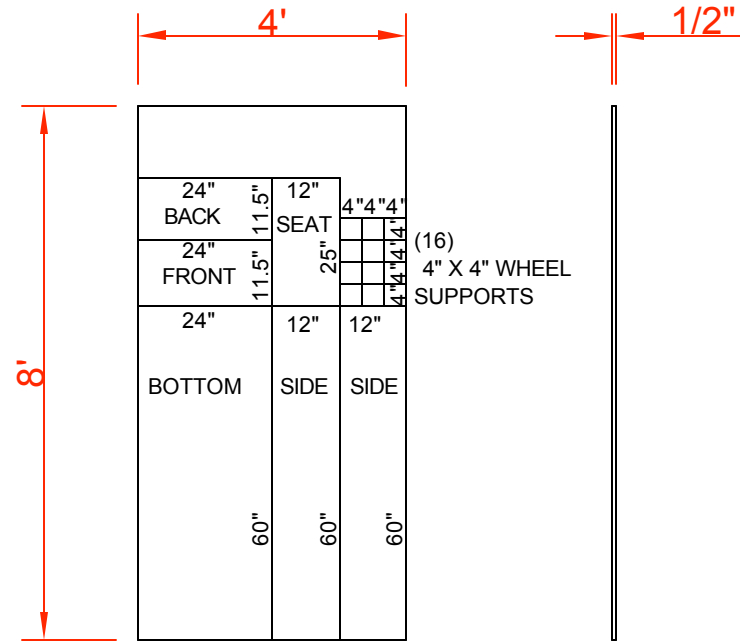


CHUCK WAGON MATERIAL LIST

4'X8'X1/2" SHEET OF PLYWOOD

QTY

- 1 - 4'X8'X1/2" SHEETS PLYWOOD
- 1 - 2"X4"X8" WOOD STUD
- 4 - 1 1/4"X20" WOOD DOWEL
- (40" TOTAL FOR AXLES)
- 2 - 3/4" X 20" WOOD DOWELS
- (40" TOTAL FOR HANDLES)
- 4 - WHEELS 10" TO 23" CUT
- FROM PLYWOOD OR OLD
- CABLE SPOOLS, METAL OR
- SPOKES CAN BE USED.
- 4 - 3/8" X 5" BOLTS AND NUTS
- 18 - 3/8" X 1" BOLTS AND NUTS
- 1 - 3/8" X 8" BOLTS AND NUTS
- 14 - 3/8" WASHERS
- 1 - BED SHEET X 60" APPROX.
- 2 - ANGLE IRONS 8" X 1" OR 2"
OR
1- LARGE "U" BOLT
2- SMALL "U" BOLTS
- 3 -RIBS 83" X 3" OR 2"
MADE OF METAL STRIPS
WOOD OR PLASTIC 1/2" TUBING BOX
- 1 BOX -1" WOOD OR DRYWALL SCREWS
- 1 - BOTTLE CARPENTERS WOOD GLUE

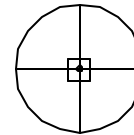


NOTES:

METAL SLEEVES WILL BE ALLOWED OVER EXPOSED PART OF AXLE TO PREVENT WEARING OF THE DOWELS, AXLE MUST BE WOOD:

4" X 4" SUPPORTS CAN ALSO BE OF METAL BUT NO BEARINGS OF ANY KIND WILL BE ALLOWED. THIS IS ONLY TO PROTECT THE WOOD FROM WEARING.

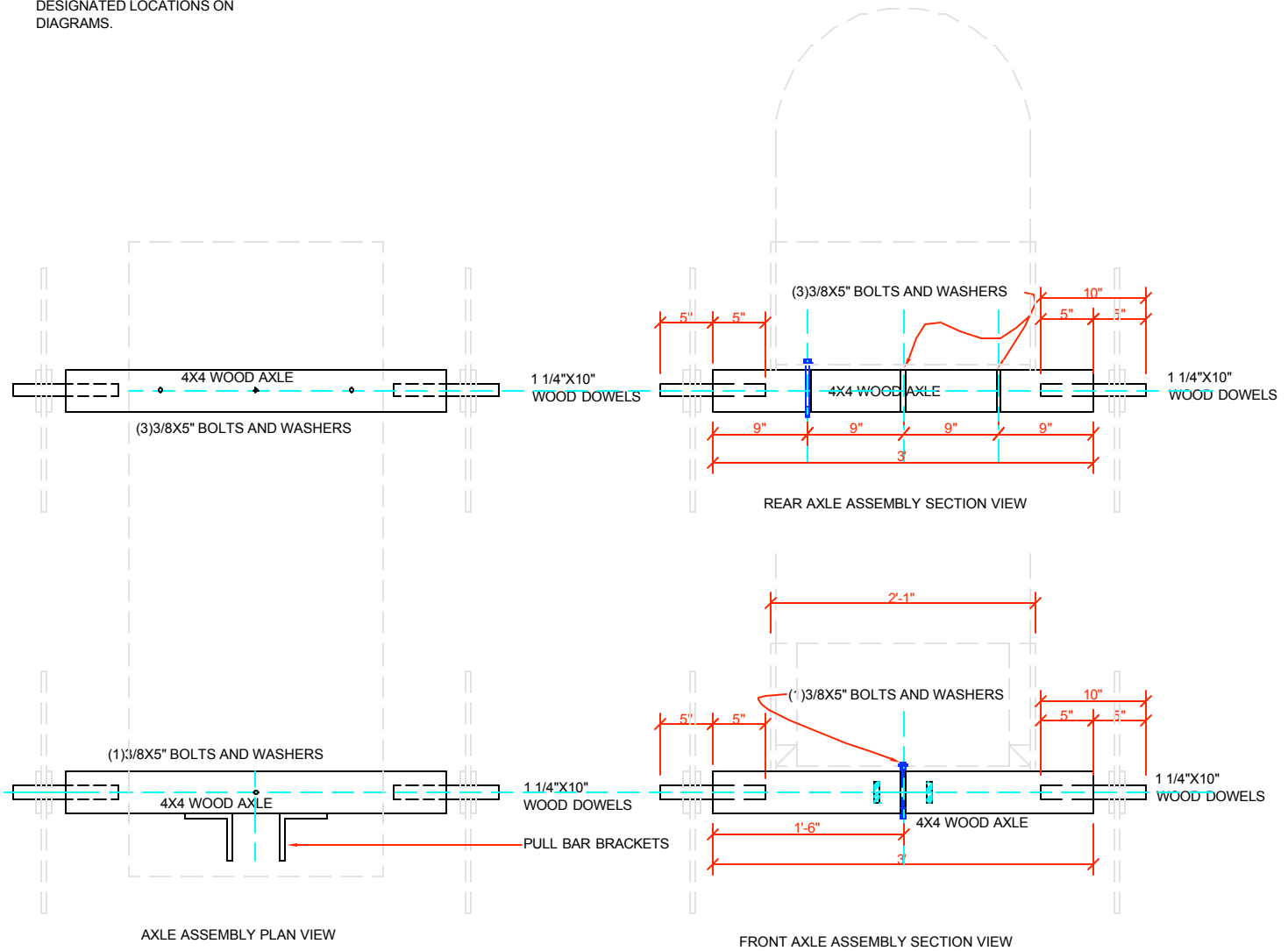
ASSEMBLE WAGONS WITH SCREWS AND GLUE, INSURE THAT ALL MOVING PARTS MOVE FREELY. ALL MOVING PARTS SHOULD BE MADE TO FIT INTO WAGON FOR STORAGE. PULL BAR SHOULD BE ATTACHED TO THE WAGON SO IT CAN BE RAISED WITHOUT HITTING THE FRONT OF THE WAGON.

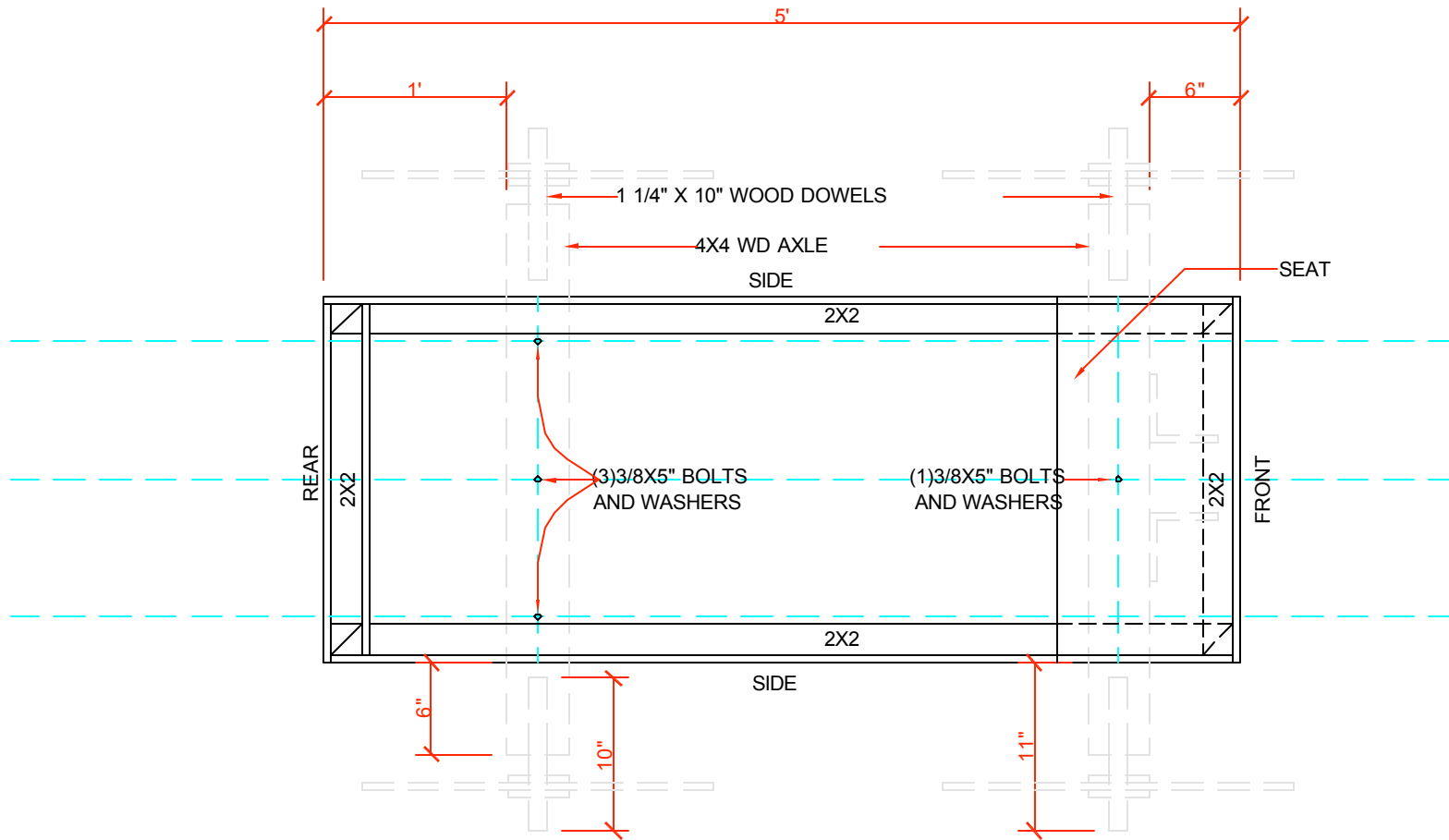


STEP 2

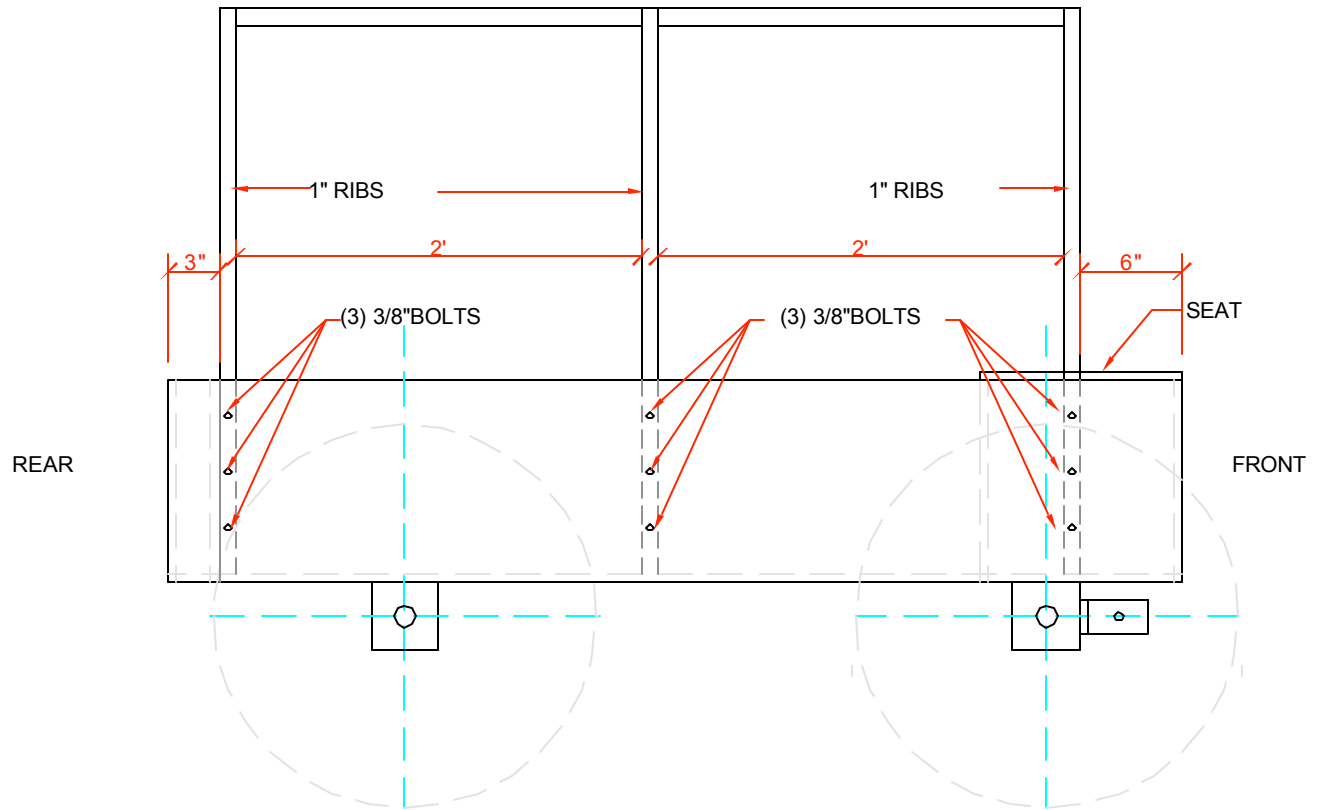
NOTE:

1. DRILL 3/8" HOLE TO ACCOMMODATE BOLTS IN DESIGNATED LOCATIONS ON DIAGRAMS.

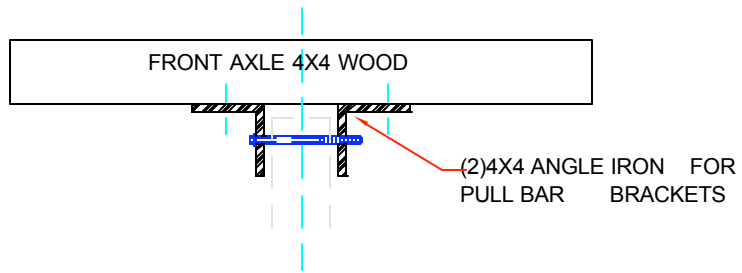




PLAN VIEW OF BODY ASSEMBLY

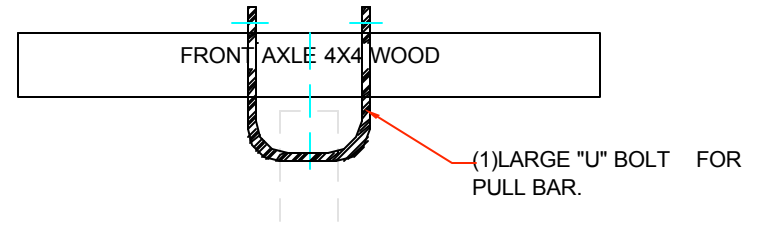


ELEVATION VIEW OF SIDE

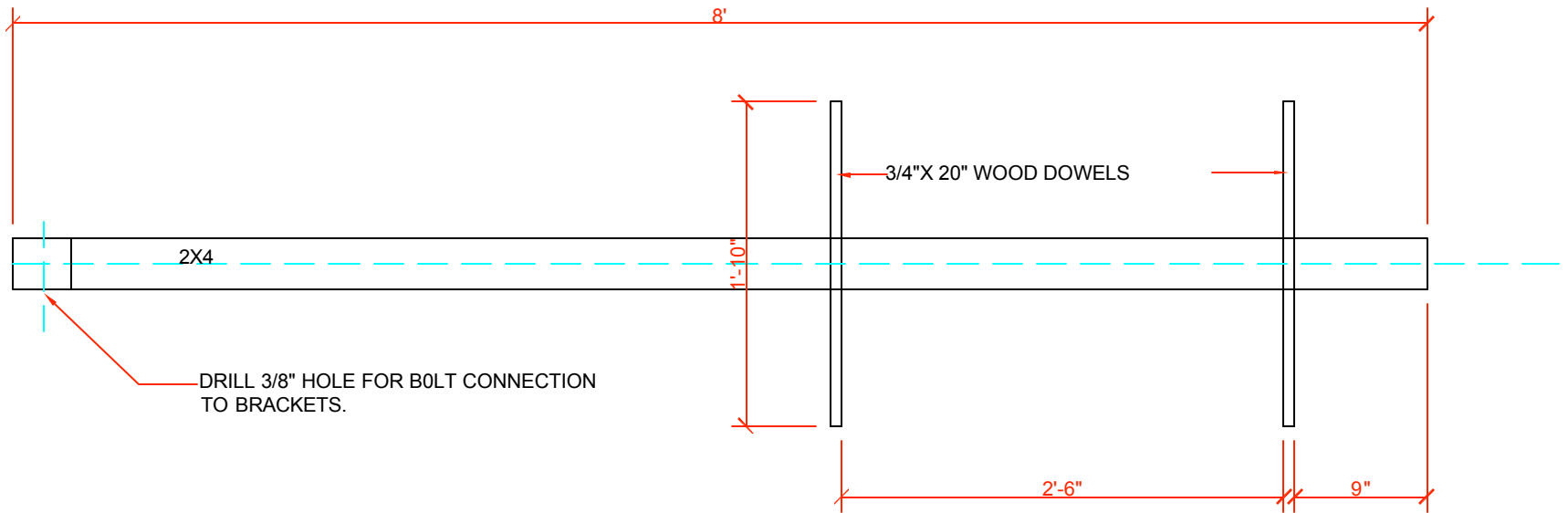


PULL BAR BRACKET ASSEMBLY PLAN VIEW

OR



PULL BAR BRACKET ASSEMBLY PLAN VIEW



PULL BAR ASSEMBLY PLAN VIEW